

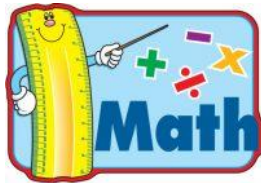
As many of you may already know, the Annual Giving Campaign is our biggest fundraiser of the year. Because of your donations, our children receive:



**Classroom Aides**



**Enriched Social Science Instruction**



**Enriched Math Instruction**



**Physical Education and Equipment**



**Art Instruction**

**MUSIC MATTERS!**



**Music Instruction**



**Dance Instruction**



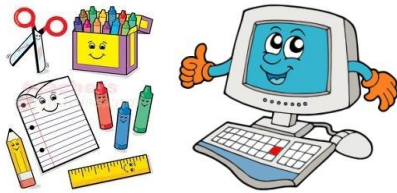
**The Computer Lab**



**School Garden and Native Plant Garden**



**Field Trips**



**School Supplies and Technology Maintenance**



**Earthquake and Safety Supplies**



**Compliance and Testing Staff**



## Safety Personnel, Yard and Library Supervision



## Chess Program

The funds raised this school year are spent this school year to enrich our children's educational experience.

We need to raise \$400,000.00 from Hancock Park Elementary School Families during the Annual Giving Campaign. We hope that each family will donate \$850.00 or more per student. This is the equivalent of a little more than \$3.00 a day. We understand that some of families may not be in position to do that, we only ask that you give what you can. Monthly payment options are available and you can also donate online at [www.hancockparkschool.com](http://www.hancockparkschool.com)

If you haven't already donated we ask that you do so as soon as possible.

If you are a resident of Park La Brea, it will match your donation dollar for dollar up to \$100,000.00.

If you have any questions email [friends@hancockparkschool.com](mailto:friends@hancockparkschool.com)

**THANK YOU!**